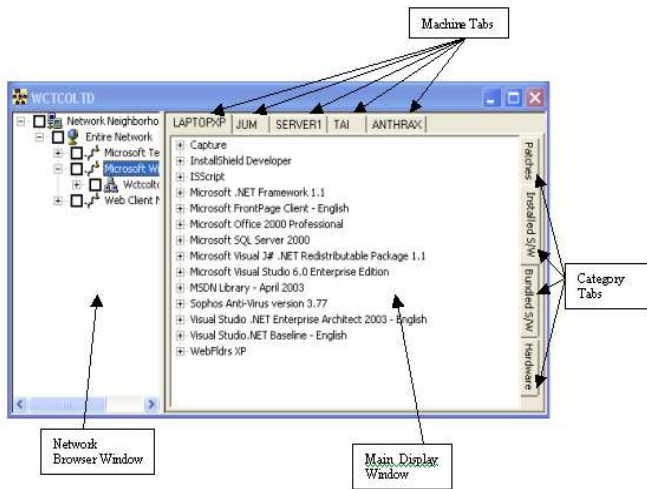


Capture-IT

Capture-Lite Capture-NET



Network Audits Made Easy



Capture IT is designed to allow you to gather a variety of information from your network in a matter of seconds, offering you time saving information gathering in real time.

Capture IT consists of 2 products Capture Lite, which allows you to audit individual PCs and Capture NET which allows you to audit a network be it on a single or multiple domain.

By using both Capture Lite and Capture NET in combination, standalone computers can be audited and then added to the NET capture so that you have a full inventory of your systems.

Capture IT is unique in that it provides a secure method

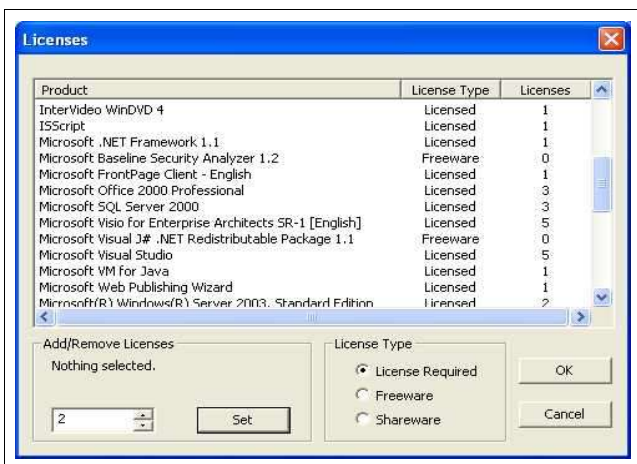
of information gathering whereby auditors do not need to have access to the computer nor do they not need to install an executable file or agent on each PC or target system. This means users have no need to be concerned about unauthorised access to their files and administrators do not need to worry about pushing out agents across the network.

Capture IT is designed to be simple to install and simple to use, while providing indepth access to information

With Capture IT you have a variety of features, but the main ones are as follows:

Software auditing and Licencing

CaptureNET scans individual, selective or network wide, computers and retrieves the names, versions, installations dates and locations of every installed software product on each machine. The results may then be shown via tables or charts. In addition, summary reports are provided to allow you to see the total quantity of each software installed on the entire network, where the software is installed and whether it has been purchased or not..



The capture will also differentiate between bundled software and installed software.

In addition, by utilising Capture-Lite you can scan a standalone computers or schedule captures on a remote PC, with the resultant data being e-mailed to your IT department to be integrated into the network capture allowing you to have a complete inventory report.

Details include the name, installed location, serial number, install date amongst other information. All of this data can be viewed in HTML or XML which will allow you to further analyse the information.

also produce a pie or bar chart to illustrate how many of each version of Excel are installed in your entire organisation.

By selecting a particular software (e.g. Excel) you can

Capture-IT

Capture-Lite Capture-NET



Network Audits Made Easy

Comparisons

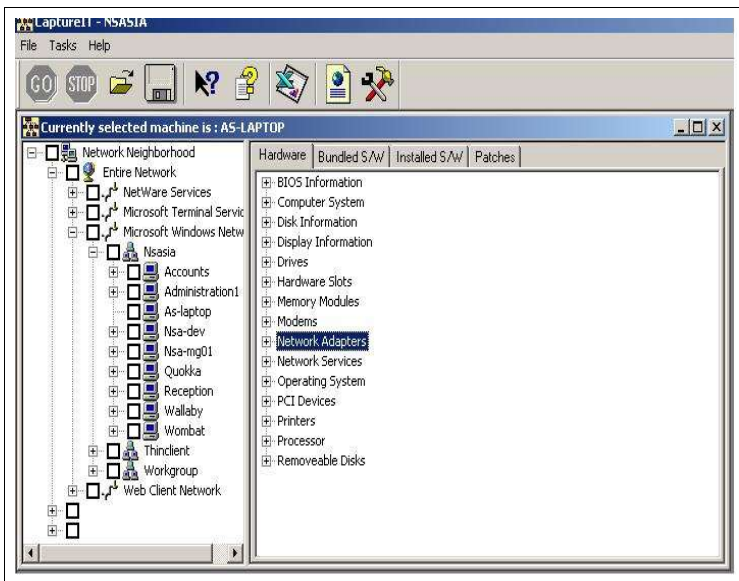
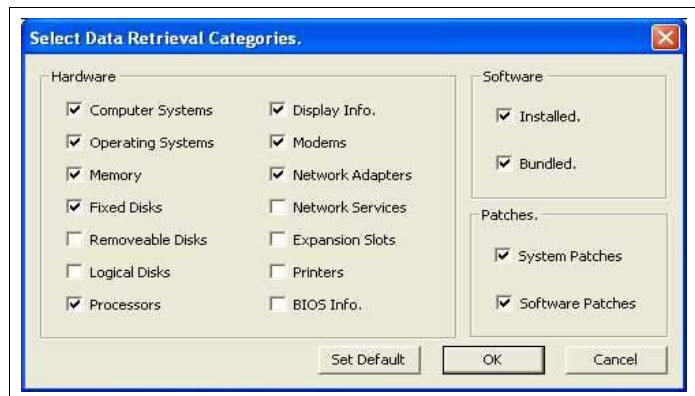
A unique feature is that of being able to take an old capture and compare it against another one, then generate a report. The resulting report will detail the difference within the hardware and software between the 2 captures. This allows you to track inventory changes as well as locating and defining network configuration errors.

Patch Management

Service packs, hot fixes and updates are listed along with a description, the installation dates, the type of installation and verification of success or failure.

Hardware Analysis

The hardware capture can be run over the network or on a standalone computer and allows you to select as much or as little detail as required within each category. Information on network settings, available expansion slots as well as the type of RAM and available slots, are all displayed to allow you to manage your hardware inventory both with regards to components and location.



Graphical, HTML and XML reports can be created to allow you to plan for hardware upgrades of specific components and ensure that the correct computers are allocated to the correct positions.

Specifying which peripherals are attached to which computer or who has access to what is easily reported and covers such peripherals as printers, scanners, networked photocopiers, removable drives, etc.

Regular reports can be scheduled to allow you to see which computers need attention and which do not. For example, available hard disk space, hardware failures or simply to compare past capture against present.

Scheduling

CaptureIT can be setup to run in unattended mode as a regular scheduled task. The data capture will then run at a scheduled time and collect data from the machines you select. Scheduling is fully configurable - you may run multiple schedules on different machines and with different data retrieval profiles.

Installation

Installation and set up is extremely simple and only needs administrative privileges to log in and start the capture process. The software does not need to be installed on the server and can be activated from any Windows 2000 computer or above, and when processing the effect on the network is negligible.

For further information or for an evaluation CaptureIT CD please contact one of our resellers.